

Natural

Length & Width : 914mm x 152mm



Nove Pearl



Nove Snow



Nove Smoke



Nove Cream



Nove Teak

Natural

Thickness & Wear Layer : 5.2mm x 0.55mm



Nove Spice



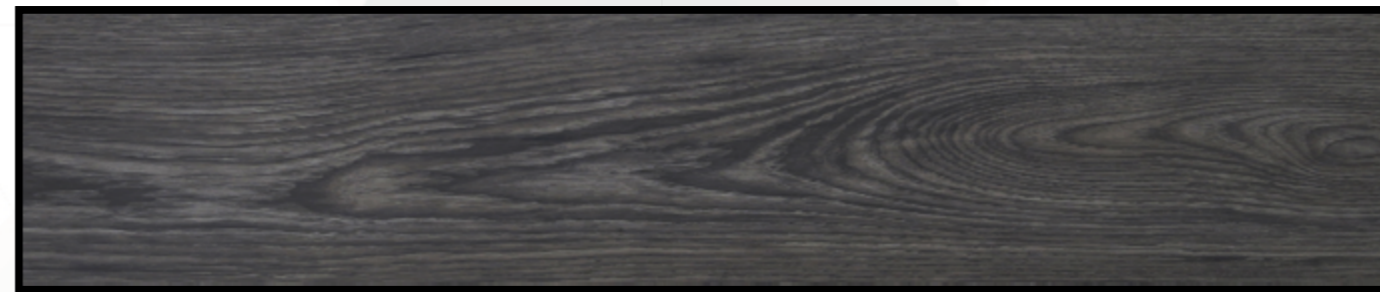
Nove Cherry



Nove Wenge



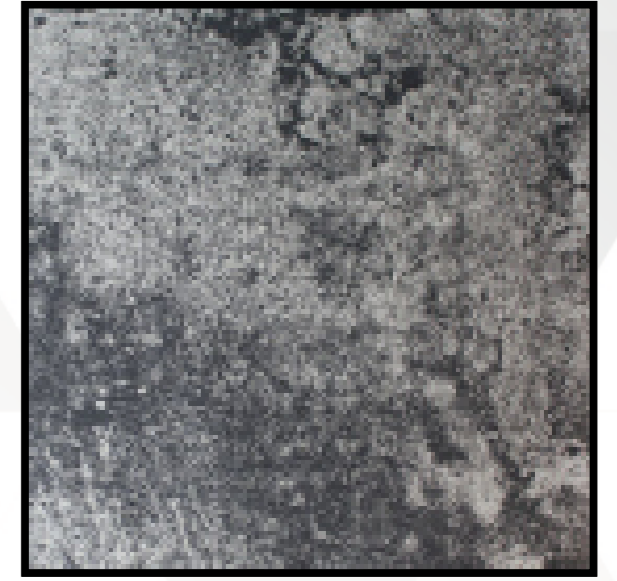
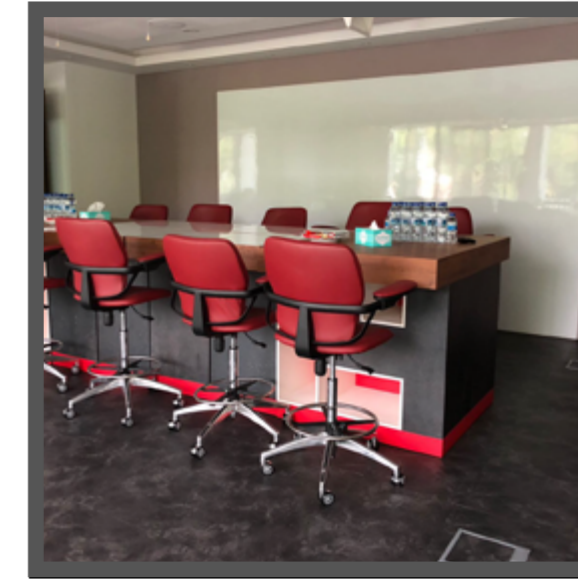
Nove Brandy



Nove Ash

Signature

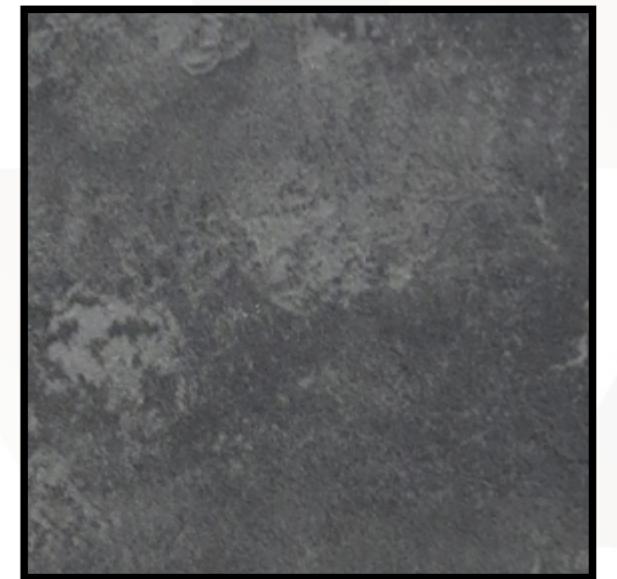
Dimensions : 457mm x 457mm x 5.2mm



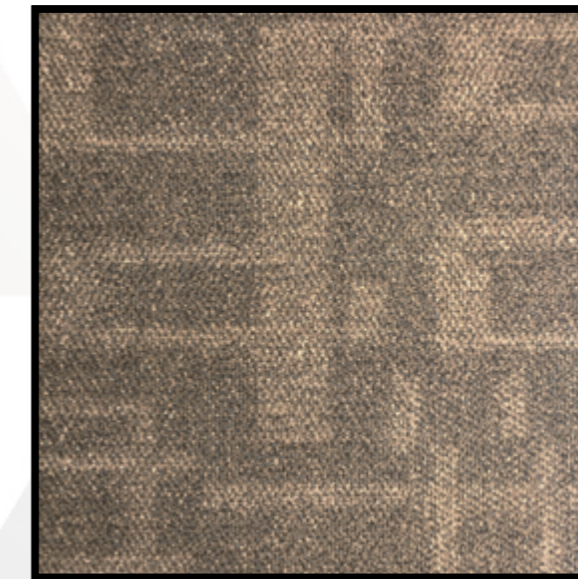
Nove Cemento



Nove Crema



Nove Slate



Nove Carpet



Nove Granite

THE FLOOR YOU DESERVE

5.2

The 'Push-to-Fit' interlocking clips at alternate intervals along the edges allow water to flow through the seams, making it an ideal floor covering in damp areas.

The base structure is water repellent, and constructed to facilitate the water channelling underneath the tiles. Its toughness also induces the overall stability of the floor.

### WHY NOVEFLOR?

From the intricate grain details to the unique characteristics of real woods and stones, we find inspiration for our luxury vinyl floors (LVF) in the beauty of nature. Each pattern has been carefully assessed and ensured to be the finest and exclusive selection. By incorporating the exquisite design, high performance, and quality into the ultimate product, you can easily transform your space with the perfect floor covering. Our product maintains the characteristics of natural material without the practical drawbacks of real wood and stone. It is built on a solid, water-repellent base structure which makes it an ideal floor covering in interior damp areas such as the bathroom and balcony. For other unique characteristics, please refer to the technical specifications on the back cover.

### APPLICATIONS



FEATURE WALL



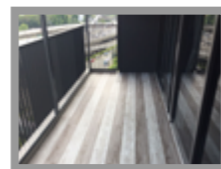
RETAIL STORE



KITCHEN



RESTAURANT



BALCONY



BATHROOM



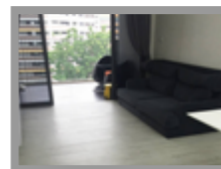
OFFICE



FITNESS CENTRE

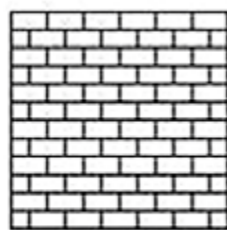


CHILD CARE CENTRE

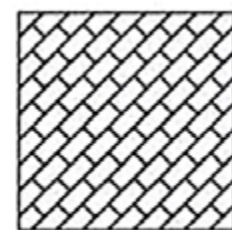


LIVING ROOM

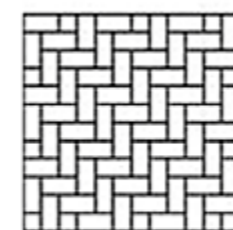
### TILES LAYOUT



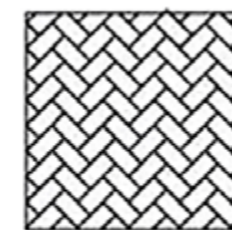
Running Bond



45 Degree Running Bond



90 Degree Herringbone



45 Degree Herringbone

PRODUCT DESCRIPTION	STANDARDS	NOVEFLOR Push-to-Fit Resilient Vinyl Tiles
Thickness (mm)	EN428	5.2
Plank Size (mm)		914 x 152
Weight (kg/m2)	EN430	8.53
Box (2.09 m2)		15 planks per box
Wear Layer (mm)	EN429	0.55mm
PU Coated		Yes
Surface		PU Coated
Bevelled Edge		Yes
	EN433	< 0.08mm
<b>TECHNICAL SPECIFICATIONS</b>		
Residual indentation (mm)	EN433	< 0.08mm
Anti Slip Category	DIN51130	R9
Slip Resistance	EN14041	DS
Fire Behaviour	EN13501-1	Bfl-s1
Reaction to Fire	EN14041	Class Efl
Colour Fastness	ISO 105-802	Suitable, Above Grade 6
Underfloor Heating	EN1254	Pass
Castor wheel traffic	EN425:2000	Pass (No detachment of layers, opening of joints & crazing were found after 25000 revolutions.)
Dimensional Stability & Curling after exposure to heat	EN434	< 0.75mm (80 Deg. Cel./6Hr)
Dimensional Variations	EN13329	Specimen size of length direction :180mm x 20mm ol ave between 50%RH & 30%RH: -0,13mm ol ave between 50%RH & 90%RH: 0,03mm Specimen size of width direction :150mm x 20mm ow ave between 50%RH & 30%RH: -0,03mm ow ave between 50%RH & 90%RH: 0mm
Abrasion Class	EN13329	AC4
Impact Class	EN13329	IC3
Flammability	EN71 Part 2	Pass
Toxicity	EN71-3	Pass
Peel Resistance	EN431:1994	78N / 50mm
Impact Sound Insulation	ISO 717-2	6dB
Drum Sound	EPLF 021029-3:2004	Good
Chemical Stains Resistance	EN423	Pass
Dragging of Furniture	EN424	Pass
Thermal insulation	ISO 8301:1991	Thermal conductivity 0.11 W / (m.K)
Dynamic coefficients of friction	EN 13893	Ave dynamic coefficients of friction parallel to length : 0,57 Ave dynamic coefficients of friction parallel to width : 0,54
Content of Pentachlorophenol(PCP)	EN14041 Annex B	Pass, less than 0.05 ppm
Formaldehyde emission	EN 717-2	Pass, Class E1
Toxic Gas Emission during burning	BS6853-1999 Annex B	Pass, within requirement of 1.0mm max.

