

Natural

Length & Width : 914mm x 152mm



Nove Pearl



Nove Snow



Nove Smoke



Nove Cream



Nove Teak

Natural

Thickness & Wear Layer : 5.2mm x 0.55mm



Nove Spice



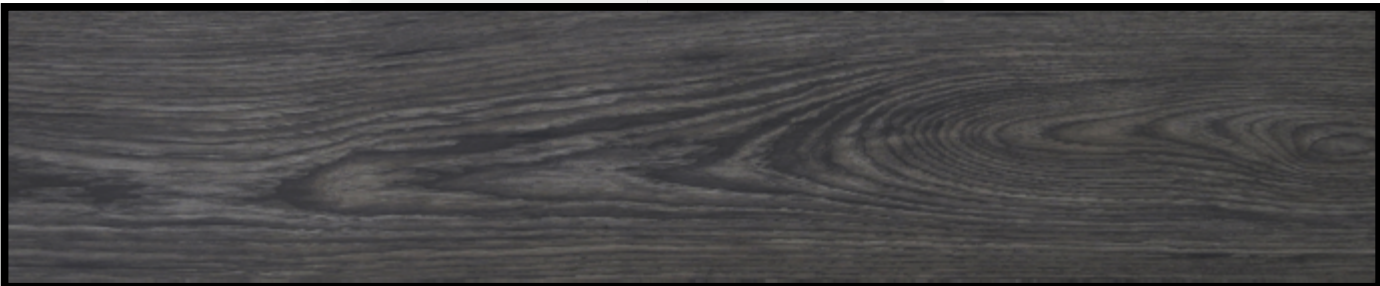
Nove Cherry



Nove Wenge



Nove Brandy



Nove Ash

Signature

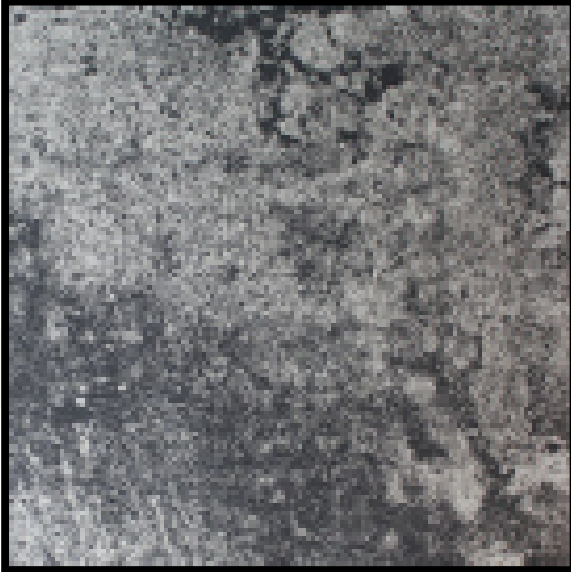
Dimensions : 457mm x 457mm x 5.2mm



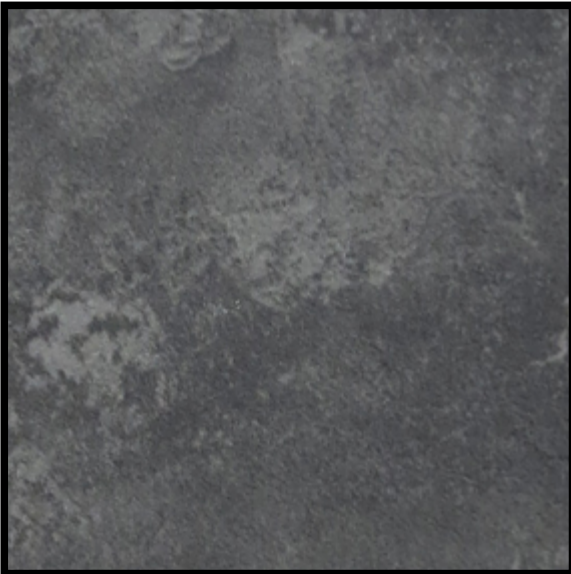
Nove Crema



Nove Carpet



Nove Cemento



Nove Slate



Nove Granite

THE FLOOR YOU DESERVE

5.2



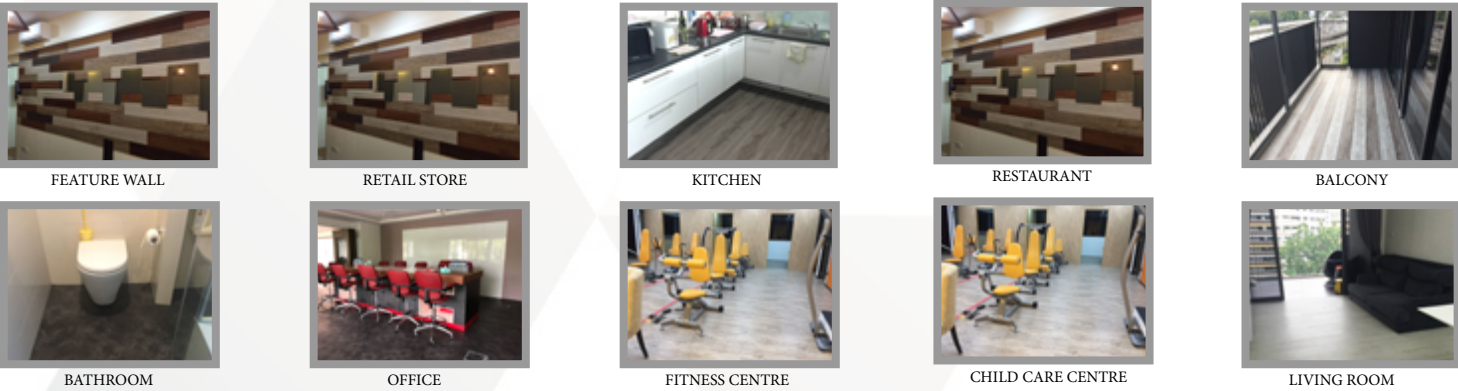
The 'Push-to-Fit' interlocking clips at alternate intervals along the edges allow water to flow through the seams, making it an ideal floor covering in damp areas.

The base structure is water repellent, and constructed to facilitate the water channelling underneath the tiles. Its toughness also induces the overall stability of the floor.

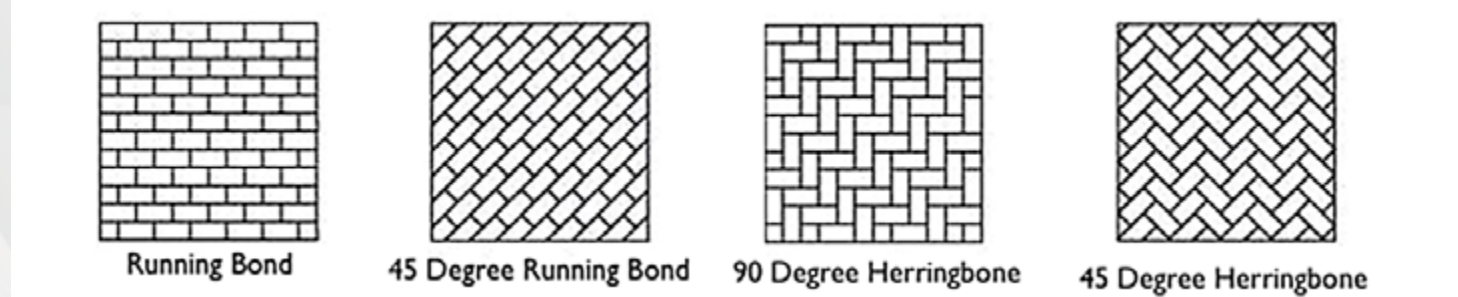
WHY NOVEFLOR?

From the intricate grain details to the unique characteristics of real woods and stones, we find inspiration for our luxury vinyl floors (LVF) in the beauty of nature. Each pattern has been carefully assessed and ensured to be the finest and exclusive selection. By incorporating the exquisite design, high performance, and quality into the ultimate product, you can easily transform your space with the perfect floor covering. Our product maintains the characteristics of natural material without the practical drawbacks of real wood and stone. It is built on a solid, water-repellent base structure which makes it an ideal floor covering in interior damp areas such as the bathroom and balcony. For other unique characteristics, please refer to the technical specifications on the back cover.

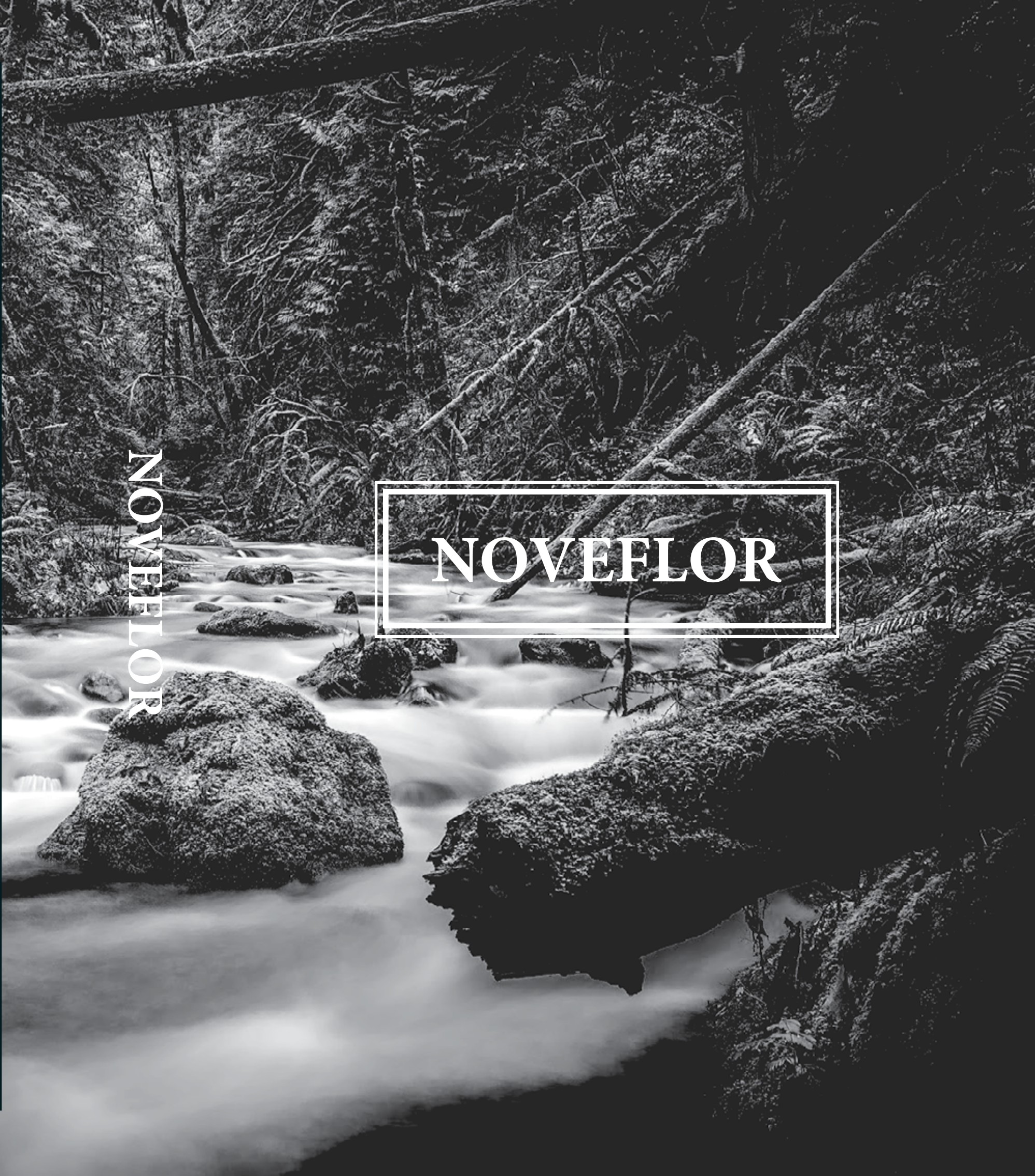
APPLICATIONS



TILES LAYOUT



| PRODUCT DESCRIPTION                                    | STANDARDS           | NOVEFLOR Push-to-Fit Resilient Vinyl Tiles   |
|--|---------------------|--|
| Thickness (mm)   | EN428               | 5.2  |
| Plank Size (mm)  |                     | 914 x 152  |
| Weight (kg/m2)   | EN430               | 8.53   |
| Box (2.09 m2)  |                     | 15 planks per box  |
| Wear Layer (mm)  | EN429               | 0.55mm   |
| PU Coated  |                     | Yes  |
| Surface  |                     | PU Coated  |
| Bevelled Edge  |                     | Yes  |
|  | EN433               | < 0.08mm   |
| TECHNICAL SPECIFICATIONS                               |                     |  |
| Residual indentation (mm)                              | EN433               | < 0.08mm   |
| Anti Slip Category                                     | DIN51130            | R9   |
| Slip Resistance  | EN14041             | DS   |
| Fire Behaviour   | EN13501-1           | Bfl-s1   |
| Reaction to Fire                                       | EN14041             | Class Efl  |
| Colour Fastness  | ISO 105-802         | Suitable, Above Grade 6  |
| Underfloor Heating                                     | EN1254              | Pass   |
| Castor wheel traffic                                   | EN425:2000          | Pass (No detachment of layers, opening of joints & crazing were found after 25000 revolutions.)  |
| Dimensional Stability & Curling after exposure to heat | EN434               | < 0.75mm (80 Deg. Cel./6Hr)  |
| Dimensional Variations                                 | EN13329             | Specimen size of length direction :180mm x 20mm<br>o1 ave between 50%RH & 30%RH: -0,13mm<br>o1 ave between 50%RH & 90%RH: 0,03mm<br>Specimen size of width direction :150mm x 20mm<br>ow ave between 50%RH & 30%RH: -0,03mm<br>ow ave between 50%RH & 90%RH: 0mm |
| Abrasion Class   | EN13329             | AC4  |
| Impact Class   | EN13329             | IC3  |
| Flammability   | EN71 Part 2         | Pass   |
| Toxicity   | EN71-3              | Pass   |
| Peel Resistance  | EN431:1994          | 78N / 50mm   |
| Impact Sound Insulation                                | ISO 717-2           | 6dB  |
| Drum Sound   | EPLF 021029-3:2004  | Good   |
| Chemical Stains Resistance                             | EN423               | Pass   |
| Dragging of Furniture                                  | EN424               | Pass   |
| Thermal insulation                                     | ISO 8301:1991       | Thermal conductivity 0.11 W / (m.K)  |
| Dynamic coefficients of friction                       | EN 13893            | Ave dynamic coefficients of friction parallel to length : 0,57<br>Ave dynamic coefficients of friction parallel to width : 0,54  |
| Content of Pentachlorophenol(PCP)                      | EN14041 Annex B     | Pass, less than 0.05 ppm   |
| Formaldehyde emission                                  | EN 717-2            | Pass, Class E1   |
| Toxic Gas Emission during burning                      | BS6853-1999 Annex B | Pass, within requirement of 1.0mm max.   |



NOVEFLOR